

Corpus-based Learning of Analogies and Semantic Relations

Peter D. Turney (peter.turney@nrc-cnrc.gc.ca)

*Institute for Information Technology
National Research Council Canada
M-50 Montreal Road
Ottawa, Ontario, Canada, K1A 0R6
phone: (613) 993-8564
fax: (613) 952-7151*

Michael L. Littman (mlittman@cs.rutgers.edu)

*Department of Computer Science
Rutgers University
Piscataway, NJ 08854-8019, USA*

August 23, 2005

Abstract. We present an algorithm for learning from unlabeled text, based on the Vector Space Model (VSM) of information retrieval, that can solve verbal analogy questions of the kind found in the SAT college entrance exam. A verbal analogy has the form $A:B::C:D$, meaning “ A is to B as C is to D ”; for example, mason:stone::carpenter:wood. SAT analogy questions provide a word pair, $A:B$, and the problem is to select the most analogous word pair, $C:D$, from a set of five choices. The VSM algorithm correctly answers 47% of a collection of 374 college-level analogy questions (random guessing would yield 20% correct; the average college-bound senior high school student answers about 57% correctly). We motivate this research by applying it to a difficult problem in natural language processing, determining semantic relations in noun-modifier pairs. The problem is to classify a noun-modifier pair, such as “laser printer”, according to the semantic relation between the noun (printer) and the modifier (laser). We use a supervised nearest-neighbour algorithm that assigns a class to a given noun-modifier pair by finding the most analogous noun-modifier pair in the training data. With 30 classes of semantic relations, on a collection of 600 labeled noun-modifier pairs, the learning algorithm attains an F value of 26.5% (random guessing: 3.3%). With 5 classes of semantic relations, the F value is 43.2% (random: 20%). The performance is state-of-the-art for both verbal analogies and noun-modifier relations.

Keywords: analogy, metaphor, semantic relations, Vector Space Model, cosine similarity, noun-modifier pairs.

1. Introduction

Computational approaches to analogy-making typically involve hand-coded knowledge bases (French, 2002). In this paper, we take a different approach, based on the idea that analogical reasoning can be approximated to some extent by a cosine measure of vector similarity, where

© 2005 National Research Council Canada.

the vectors are derived from statistical analysis of a large corpus of text. We demonstrate this approach with two real-world problems, answering multiple-choice verbal analogy questions and classifying noun-modifier semantic relations. This work is only a first step, and analogical reasoning is still very far from being a solved problem, but we believe that our results are encouraging. A vector-based approach to analogies and semantic relations may be able to overcome some of the limitations (such as the knowledge-engineering bottleneck) that have impeded progress with the knowledge-based approach.

A verbal analogy has the form $A:B::C:D$, meaning “ A is to B as C is to D ”; for example, “mason is to stone as carpenter is to wood”. (A mason is an artisan who works with stone; a carpenter is an artisan who works with wood.) Analogies of this kind are sometimes called *proportional analogies*, and they have been studied at least since 350 BC (Aristotle, 2001). In spite of their long history, they are still not well understood; their subjective character resists quantitative analysis. In our research, we have used multiple-choice questions, developed for educational testing, as a tool for objective analysis of verbal analogies.

The SAT college entrance exam contains multiple-choice verbal analogy questions, in which there is a word pair, $A:B$, and five choices.¹ The task is to select the most analogous word pair, $C:D$, from the set of five word pairs. Table I gives an example. In the terminology of educational testing, the first pair, $A:B$, is called the *stem* of the analogy.

For multiple-choice analogy questions, the best choice is the word pair with the semantic relation that is most similar to the relation of the stem pair. Although there has been much research on measuring the similarity of *individual concepts* (Lesk, 1969; Church and Hanks, 1989; Dunning, 1993; Smadja, 1993; Resnik, 1995; Landauer and Dumais, 1997; Turney, 2001; Pantel and Lin, 2002), there has been relatively little work on measuring the similarity of *semantic re-*

Table I. A sample SAT question.

Stem:	mason:stone
Choices:	(a) teacher:chalk
	(b) carpenter:wood
	(c) soldier:gun
	(d) photograph:camera
	(e) book:word
Solution:	(b) carpenter:wood

relationships between concepts (Vanderwende, 1994; Rosario and Hearst, 2001; Rosario et al., 2002; Nastase and Szpakowicz, 2003).

Our approach to verbal analogies is inspired by the Vector Space Model (VSM) of information retrieval (Salton and McGill, 1983; Salton, 1989). We use a vector of numbers to represent the semantic relation between a pair of words. The similarity between two word pairs, $A:B$ and $C:D$, is measured by the cosine of the angle between the vector that represents $A:B$ and the vector that represents $C:D$.

As we discuss in Section 2.2, the VSM was originally developed for use in information retrieval. Given a query, a set of documents can be ranked by the cosines of the angles between the query vector and each document vector. The VSM is the basis for most modern search engines (Baeza-Yates and Ribeiro-Neto, 1999).

Section 2 also covers related work on analogy, metaphor, and classifying semantic relations. Most of the related work has used manually constructed lexicons and knowledge bases. Our approach uses learning from unlabeled text, with a very large corpus of web pages (about one hundred billion words); we do not use a lexicon or knowledge base.

We present the details of our learning algorithm in Section 3, including an experimental evaluation of the algorithm on 374 college-level SAT-style verbal analogy questions. The algorithm correctly answers 47% of the questions. Since there are five choices per analogy question, random guessing would be expected to result in 20% correctly answered. We also discuss how the algorithm might be extended from *recognizing* analogies to *generating* analogies.

To motivate research on verbal analogies, we give an example of a practical application, the task of classifying the semantic relations of noun-modifier pairs. Given a noun-modifier pair such as “laser printer”, the problem is to classify the semantic relation between the noun (printer) and the modifier (laser). In Section 4.1, we argue that an algorithm for classification of noun-modifier relations would be useful in machine translation, information extraction, and word sense disambiguation.

An algorithm for solving SAT-style verbal analogies can be applied to classification of noun-modifier semantic relations, as we demonstrate in Section 4. Given an unclassified noun-modifier pair, we can search through a set of labeled training data for the most analogous noun-modifier pair. The idea is that the class of the nearest neighbour in the training data will predict the class of the given noun-modifier pair. We apply a supervised nearest-neighbour learning algorithm, where the measure of distance (similarity) is the cosine of the vector angles.

The data set for the experiments in Section 4 consists of 600 labeled noun-modifier pairs, from Nastase and Szpakowicz (2003). The learning

algorithm attains an F value of 26.5% when given 30 different classes of semantic relations. Random guessing would be expected to result in an F value of 3.3%. We also consider a simpler form of the data, in which the 30 classes have been collapsed to 5 classes. The algorithm achieves an F value of 43.2% with the 5-class version of the data, where random guessing would be expected to yield 20%.

Limitations and future work are covered in Section 5. The conclusion follows in Section 6.

2. Related Work

In this section, we consider related work on metaphorical and analogical reasoning (Section 2.1), applications of the Vector Space Model (Section 2.2), and research on classifying noun-modifier pairs according to their semantic relations (Section 2.3). We also discuss related work on web mining for natural language processing applications (Section 2.4).

2.1. METAPHOR AND ANALOGY

Turney et al. (2003) presented an ensemble approach to solving verbal analogies. Thirteen independent modules were combined using three different merging rules. One of the thirteen modules was the VSM module, exactly as presented here in Section 3.2. However, the focus of Turney et al. (2003) was on the merging rules; the individual modules were only briefly outlined. Therefore it is worthwhile to focus here on the VSM module alone, especially since it is the most accurate of the thirteen modules. Table II shows the impact of the VSM module on the accuracy of the ensemble. These figures suggest that the VSM module made the largest contribution to the accuracy of the ensemble. The present paper goes beyond Turney et al. (2003) by giving a more detailed description of the VSM module, by showing how to adjust the balance of precision and recall, and by examining the application of the VSM to the classification of noun-modifier relations.

Table II. Impact of the VSM module on ensemble accuracy.

	With VSM	Without VSM
Ensemble accuracy	45.0%	37.0%
Best individual module	VSM	Wordsmyth Similarity
Best individual accuracy	38.2%	29.4%

French (2002) surveyed the literature on computational modeling of analogy-making. The earliest work was a system called Argus, which could solve a few simple verbal analogy problems (Reitman, 1965). Argus used a small hand-built semantic network and could only solve the limited set of analogy questions that its programmer had anticipated. All of the systems surveyed by French used hand-coded knowledge-bases; none of them can learn from data, such as a corpus of text.

French (2002) cited Structure Mapping Theory (SMT) (Gentner, 1983) and its implementation in the Structure Mapping Engine (SME) (Falkenhainer et al., 1989) as the most influential work on modeling of analogy-making. SME takes representations of a source domain and a target domain, and produces an analogical mapping between the source and target. The domains are given structured propositional representations, using predicate logic. These descriptions include *attributes* (unary predicates indicating features), *relations* (expressing connections between entities), and *higher-order relations* (expressing connections between relations). The analogical mapping connects source domain relations to target domain relations. Originally, only identical relations were mapped, but later versions of SME allowed similar, non-identical relations to match (Falkenhainer, 1990).

With proportional analogies of the form $A:B::C:D$, the target and source domains are reduced to a minimum. Each domain consists of two features (explicitly given) and one relation (implicit), $R_1(A, B)$ and $R_2(C, D)$. The focus in our work is on the similarity measure that is used to compare the relations, rather than the analogical mapping process. We believe it is a good research strategy to focus on one aspect of the problem at a time, mapping between complex predicate logic structures (Falkenhainer et al., 1989) or measuring similarity of relations (as we do here), but eventually researchers will need to address both problems together. Real-world analogies involve domains with complex internal structures and complicated relational similarities.

Dolan (1995) described a system for extracting semantic information from machine-readable dictionaries. Parsing and semantic analysis were used to convert the Longman Dictionary of Contemporary English (LDOCE) into a large Lexical Knowledge Base (LKB). The semantic analysis recognized twenty-five different classes of semantic relations, such as *hypernym (is_a)*, *part_of*, *typical_object*, *means_of*, and *location_of*. Dolan (1995) outlined an algorithm for identifying “conventional” metaphors in the LKB. A *conventional* metaphor is a metaphor that is familiar to a native speaker and has become part of the standard meaning of the words involved (Lakoff and Johnson, 1980). For example, English speakers are familiar with the metaphorical links between (sporting) games and (verbal) arguments. Dolan’s

algorithm can identify this metaphorical connection between “game” and “argument” by observing the similarity in the LKB of the graph structure in the neighbourhood of “game” to the graph structure in the neighbourhood of “argument”. The examples of metaphors identified by the algorithm look promising, but the performance of the algorithm has not been objectively measured in any way (e.g., by SAT questions). Unfortunately, the LKB and the algorithms for parsing and semantic analysis are proprietary, and are therefore not evaluated in the present paper.

The VSM algorithm is not limited to conventional metaphors. For example, the analogy `tourniquet:bleeding::antidote:poisoning` was discovered by the VSM approach (see Section 3.3.2).

Veale (2003) presented an algorithm for automatically enhancing WordNet (Fellbaum, 1998) to facilitate analogical reasoning. The algorithm adds new links to the WordNet graph structure by analyzing the glosses (definitions). The algorithm was designed with a focus on analogies of the form `adjective:noun::adjective:noun`, such as:

- `Christian:church::Muslim:mosque`
- `Greek:Zeus::Roman:Jove`
- `Greek:alpha::Hebrew:aleph`.

Veale (2003) reported a recall of 61% and a precision of 93.5% for the task of creating analogical mappings between the gods of five different cultures (Greek, Roman, Hindu, Norse, and Celtic). It would be interesting to see whether this approach can be extended to handle SAT questions, which are not limited to adjective:noun pairs.²

Marx et al. (2002) developed an unsupervised algorithm for discovering analogies by clustering words from two different corpora. Each cluster of words in one corpus is coupled one-to-one with a cluster in the other corpus. With conventional clustering, the quality of the clustering of a set of words is typically measured by considering all possible pairs of words. The clustering is good when pairwise similarity is high for words that are in the same cluster and low for words that are in different clusters. With coupled clustering, the quality of the clustering is measured by considering all pairs of words in which one member of the pair is from the first corpus and the other member of the pair is from the second corpus. The clustering is good when pairwise similarity is high for words that are in the same coupled clusters and low for words that are in different coupled clusters. For example, one experiment used a corpus of Buddhist documents and a corpus of Christian documents. A cluster of words such as {Hindu, Mahayana,

Zen, ...} from the Buddhist corpus was coupled with a cluster of words such as {Catholic, Protestant, ...} from the Christian corpus. Thus the algorithm appears to have discovered an analogical mapping between Buddhist schools and traditions and Christian schools and traditions. Dagan et al. (2002) extend this approach from two different corpora to any number of different corpora. This is interesting work, but it is not directly applicable to SAT analogies, because it discovers analogies between clusters of words, rather than individual words.

Lapata and Lascarides (2003) described a corpus-based algorithm for logical metonymy. Metonymy and metaphor are distinct but closely related (Lakoff and Johnson, 1980). *Metonymy* is referring to something by mentioning an attribute or feature of the thing. In *logical metonymy*, an event is referred to by mentioning a noun that is involved in the event. For example, in the sentence “Mary finished the cigarette”, the implicit event is smoking the cigarette, which is metonymically referred to by explicitly mentioning only the cigarette, omitting reference to smoking. Given a logical metonymy as input, the algorithm of Lapata and Lascarides (2003) can produce a list of non-metonymical paraphrases of the input sentence, sorted in order of decreasing probability. Given “John began the cigarette”, the system would produce “John began smoking the cigarette”, “John began rolling the cigarette”, “John began lighting the cigarette”, and so on. This work is related to our work in the use of a corpus-based approach, but the details of the algorithms and the tasks are quite different.

2.2. VECTOR SPACE MODEL

In information retrieval, it is common to measure the similarity between a query and a document using the cosine of the angle between their vectors (Salton and McGill, 1983; Salton, 1989). Almost all modern search engines use the VSM to rank documents by relevance for a given query.

The VSM approach has also been used to measure the semantic similarity of words (Lesk, 1969; Ruge, 1992; Pantel and Lin, 2002). Pantel and Lin (2002) clustered words according to their similarity, as measured by a VSM. Their algorithm is able to discover the different senses of a word using unsupervised learning. They achieved impressive results on this ambitious task.

The novelty in our work is the application of the VSM approach to measuring the similarity of semantic relationships. The vectors characterize the semantic relationship between a pair of words, rather than the meaning of a single word (Lesk, 1969) or the topic of a document (Salton and McGill, 1983).

2.3. NOUN-MODIFIER SEMANTIC RELATIONS

Nastase and Szpakowicz (2003) used supervised learning to classify noun-modifier relations. To evaluate their approach, they created a set of 600 noun-modifier pairs, which they hand-labeled with 30 different classes of semantic relations. (We use this data set in our own experiments, in Section 4.) Each noun-modifier word pair was represented by a feature vector, where the features were derived from the ontological hierarchy in a lexicon (WordNet or Roget's Thesaurus). Standard machine learning tools (MBL, C5.0, RIPPER, and FOIL) were used to induce a classification model from the labeled feature vectors. Nastase and Szpakowicz (2003) described their work as exploratory; the results they presented were qualitative, rather than quantitative. Their approach seems promising, but it is not yet ready for a full quantitative evaluation.

Rosario and Hearst (2001) used supervised learning to classify noun-modifier relations in the medical domain, using MeSH (Medical Subject Headings) and UMLS (Unified Medical Language System) as lexical resources for representing each noun-modifier relation with a feature vector. They achieved good results using a neural network model to distinguish 13 classes of semantic relations. In an extension of this work, Rosario et al. (2002) used hand-crafted rules and features derived from MeSH to classify noun-modifier pairs that were extracted from biomedical journal articles. Our work differs from Rosario and Hearst (2001) and Rosario et al. (2002), in that we do not use a lexicon and we do not restrict the domain of the noun-modifier pairs.

In work that is related to Dolan (1995) (see Section 2.1), Vanderwende (1994) used hand-built rules, together with the LKB derived from LDOCE, to classify noun-modifier pairs. Tested with 97 pairs extracted from the Brown corpus, the rules had an accuracy of 52%.

Barker and Szpakowicz (1998) used memory based learning (MBL) for classifying semantic relations. The memory base stored triples, consisting of a noun, its modifier, and (if available) a marker. The marker was either a preposition or an appositive marker when the noun-modifier pair was found in text next to a preposition or an apposition. A new noun-modifier pair was classified by looking for the nearest neighbours in the memory base. The distance (similarity) measure was based on literal matches between the elements in the triples, which constrained the algorithm's ability to generalize from past examples.

Some research has concentrated on learning particular semantic relations, such as *part_of* (Berland and Charniak, 1999) or *type_of* (Hearst, 1992). These are specific instances of the more general problem considered here (see Table XI).

The algorithm of Lapata and Lascarides (2003) for paraphrasing logical metonymy can be viewed as a method for making semantic relations explicit. Some of the logical metonymies they consider take the form of noun-modifier pairs, such as “difficult language”, which can be non-metonymically paraphrased as “language that is difficult to learn”. However, most noun-modifier pairs are not logical metonymies, and the two tasks seem different, since it is difficult to cast logical metonymy as a classification problem.

In this paper, we apply a measure of analogical similarity to classifying noun-modifier relations, but, in principle, this could work the other way around; an algorithm for classifying noun-modifier relations could be used to solve SAT-style verbal analogy problems. The stem pair and each of the choice pairs could be classified according to their semantic relations. Ideally, the stem and the correct choice would be classified as having the same semantic relation, whereas the incorrect choices would have different semantic relations. We have done some preliminary experiments with this approach, but have not yet had any success.

2.4. WEB MINING

Our learning algorithm relies on a very large corpus of web pages. We obtain information about the frequency of various patterns of words by querying a web search engine (AltaVista). Other researchers have used web search engines to acquire data for natural language processing applications. For example, Resnik (1999a) used AltaVista to find bilingual text. Our approach is different in that it only needs frequency information and not the text itself; the only information we use from AltaVista is the *hit count* (the number of web pages that match the given query).

The use of hit counts from web search engines to obtain lexical statistical information was introduced by Turney (2001), who used hit counts from AltaVista to estimate Pointwise Mutual Information (PMI). This approach to estimating PMI resulted in a good measure of *semantic similarity* between pairs of words. When evaluated with multiple-choice synonym questions, taken from the Test of English as a Foreign Language (TOEFL), the PMI estimate achieved a score of 73.75% (Turney, 2001). In comparison, the average human TOEFL score was 64.5%.

Turney and Littman (2003) used AltaVista hit counts to determine the *semantic orientation* of words. A word has a positive semantic orientation when it conveys praise (honest, cute) and a negative orientation when it indicates criticism (horrible, cruel). Semantic orientation

varies in both direction (positive or negative) and degree (mild to strong). The algorithm was experimentally tested with 3,596 words (including adjectives, adverbs, nouns, and verbs) that were manually labeled positive (1,614 words) and negative (1,982 words). It attained an accuracy of 82.8% on the full test set, but the accuracy was greater than 95% when the algorithm was allowed to abstain from classifying mild words.

In this paper, we use hit counts to measure the similarity between semantic relations, rather than the similarity between individual concepts (Turney, 2001). The above papers share the idea of using web search engines to exploit a huge corpus for natural language processing applications, but the details of the applications are quite different.

3. Solving Verbal Analogy Problems

In Section 3.1, we examine the task of solving verbal analogies. Section 3.2 outlines the application of the Vector Space Model to this task. The experimental results are presented in Section 3.3 and discussed in Section 3.4.

3.1. ANALOGY PROBLEMS

The semantic relation between a pair of words may have no direct, obvious connection to the individual words themselves. In an analogy $A:B::C:D$, there is not necessarily much in common between A and C or between B and D . Consider the analogy “traffic:street::water:riverbed” (one of our SAT questions). Traffic flows down a street; water flows down a riverbed. A street carries traffic; a riverbed carries water. This analogy is not superficial; there is a relatively large body of work on the mathematics of hydrodynamics applied to modeling automobile traffic flow (Daganzo, 1994; Zhang, 2003; Yi et al., 2003). Yet, if we look at the positions of these four words in the WordNet hierarchy (Fellbaum, 1998), it appears that they have little in common (see Table III). “Traffic” and “water” belong to different hierarchies (the former is a “group” and the latter is a “physical thing”). “Street” and “riverbed” are both “physical objects”, but it takes several steps up the hierarchy to find the abstract class to which they both belong.

This example illustrates that the similarity of semantic relations between words is not directly reducible to the semantic similarity of individual words. Algorithms that have been successful for individual words (Lesk, 1969; Church and Hanks, 1989; Dunning, 1993; Smadja, 1993; Resnik, 1995; Landauer and Dumais, 1997; Turney, 2001; Pantel

Table III. Location of the four words in the WordNet hierarchy.

traffic	⇒	collection ⇒ group, grouping
water	⇒	liquid ⇒ fluid ⇒ substance, matter ⇒ entity, physical thing
street	⇒	thoroughfare ⇒ road, route ⇒ way ⇒ artifact ⇒ physical object ⇒ entity, physical thing
riverbed	⇒	bed, bottom ⇒ natural depression ⇒ geological formation ⇒ natural object ⇒ physical object ⇒ entity, physical thing

and Lin, 2002) will not work for semantic relations without significant modification.

3.2. VSM APPROACH

Given candidate analogies of the form $A:B::C:D$, we wish to assign scores to the candidates and select the highest scoring candidate. The quality of a candidate analogy depends on the similarity of the semantic relation R_1 between A and B to the semantic relation R_2 between C and D . The relations R_1 and R_2 are not given to us; the task is to infer these relations automatically. Our approach to this task, inspired by the Vector Space Model of information retrieval (Salton and McGill, 1983; Salton, 1989), is to create vectors, r_1 and r_2 , that represent features of R_1 and R_2 , and then measure the similarity of R_1 and R_2 by the cosine of the angle θ between r_1 and r_2 :

$$r_1 = \langle r_{1,1}, \dots, r_{1,n} \rangle,$$

$$r_2 = \langle r_{2,1}, \dots, r_{2,n} \rangle,$$

$$\text{cosine}(\theta) = \frac{\sum_{i=1}^n r_{1,i} \cdot r_{2,i}}{\sqrt{\sum_{i=1}^n (r_{1,i})^2} \cdot \sqrt{\sum_{i=1}^n (r_{2,i})^2}} = \frac{r_1 \cdot r_2}{\sqrt{r_1 \cdot r_1} \cdot \sqrt{r_2 \cdot r_2}} = \frac{r_1 \cdot r_2}{\|r_1\| \cdot \|r_2\|}.$$

We create a vector, r , to characterize the relationship between two words, X and Y , by counting the frequencies of various short phrases containing X and Y . We use a list of 64 joining terms (see Table IV), such as “of”, “for”, and “to”, to form 128 phrases that contain X and Y , such as “ X of Y ”, “ Y of X ”, “ X for Y ”, “ Y for X ”, “ X to Y ”, and “ Y to X ”. We then use these phrases as queries for a search engine and

Table IV. The 64 joining terms.

1	“ ”	17	“ get* ”	33	“ like the ”	49	“ then ”
2	“ * not ”	18	“ give* ”	34	“ make* ”	50	“ this ”
3	“ * very ”	19	“ go ”	35	“ need* ”	51	“ to ”
4	“ after ”	20	“ goes ”	36	“ not ”	52	“ to the ”
5	“ and not ”	21	“ has ”	37	“ not the ”	53	“ turn* ”
6	“ are ”	22	“ have ”	38	“ of ”	54	“ use* ”
7	“ at ”	23	“ in ”	39	“ of the ”	55	“ when ”
8	“ at the ”	24	“ in the ”	40	“ on ”	56	“ which ”
9	“ become* ”	25	“ instead of ”	41	“ onto ”	57	“ will ”
10	“ but not ”	26	“ into ”	42	“ or ”	58	“ with ”
11	“ contain* ”	27	“ is ”	43	“ rather than ”	59	“ with the ”
12	“ for ”	28	“ is * ”	44	“ such as ”	60	“ within ”
13	“ for example ”	29	“ is the ”	45	“ than ”	61	“ without ”
14	“ for the ”	30	“ lack* ”	46	“ that ”	62	“ yet ”
15	“ from ”	31	“ like ”	47	“ the ”	63	“s ”
16	“ from the ”	32	“ like * ”	48	“ their ”	64	“s * ”

record the number of hits (matching documents) for each query. This process yields a vector of 128 numbers.

We have found that the accuracy of this approach to scoring analogies improves when we use the logarithm of the frequency. That is, if x is the number of hits for a query, then the corresponding element in the vector r is $\log(x + 1)$.³ Ruge (1992) found that using the logarithm of the frequency also yields better results when measuring the semantic similarity of individual words, and log-based measures for similarity are used in Lin (1998) and Resnik (1999b). Logarithms are also commonly used in the VSM for information retrieval (Salton and Buckley, 1988).

We used the AltaVista search engine (<http://www.altavista.com/>) in the following experiments. At the time our experiments were done, we estimate that AltaVista’s index contained about 350 million English web pages (about 10^{11} words). We chose AltaVista for its “*” operator, which serves two functions:

1. *Whole word matching*: In a quoted phrase, an asterisk can match any whole word. The asterisk must not be the first or last character in the quoted phrase. The asterisk must have a blank space immediately before and after it. For example, the query “immaculate * very clean” will match “immaculate and very clean”, “immaculate is very clean”, “immaculate but very clean”, and so on.
2. *Substring matching*: Embedded in a word, an asterisk can match zero to five characters. The asterisk must be preceded by at least three regular alphabetic characters. For example, “colo*r” matches “color” and “colour”.

Table V. Stemming rules.

Stemming rule	Example
If $10 < \text{length}$, then replace the last 4 characters with “*”.	advertisement \rightarrow advertise*
If $8 < \text{length} \leq 10$, then replace the last 3 characters with “*”.	compliance \rightarrow complia*
If $2 < \text{length} \leq 8$, then append “*” to the end.	rhythm \rightarrow rhythm*
If $\text{length} \leq 2$, then do nothing.	up \rightarrow up

Some of the joining terms in Table IV contain an asterisk, and we also use the asterisk for stemming, as specified in Table V. For instance, consider the pair “restrained:limit” and the joining term “* very ”. Since “restrained” is ten characters long, it is stemmed to “restrai*”. Since “limit” is five characters long, it is stemmed to “limit*”. Joining these stemmed words, we have the two queries “restrai* * very limit*” and “limit* * very restrai*”. The first query would match “restrained and very limited”, “restraints are very limiting”, and so on. The second query would match “limit is very restraining”, “limiting and very restraining”, and so on.

The vector r is a kind of *signature* of the semantic relationship between X and Y . Consider the analogy traffic:street::water:riverbed. The words “traffic” and “street” tend to appear together in phrases such as “traffic in the street” (544 hits on AltaVista) and “street with traffic” (460 hits), but not in phrases such as “street on traffic” (7 hits) or “street is traffic” (15 hits). Similarly, “water” and “riverbed” may appear together as “water in the riverbed” (77 hits), but “riverbed on water” (0 hits) would be unlikely. Therefore the angle θ between the vector r_1 for traffic:street and the vector r_2 for water:riverbed tends to be relatively small, and hence $\cosine(\theta)$ is relatively large.

To answer an SAT analogy question, we calculate the cosines of the angles between the vector for the stem pair and each of the vectors for the choice pairs. The algorithm guesses that the answer is the choice pair with the highest cosine. This learning algorithm makes no use of labeled training data.

The joining terms in Table IV are similar to the patterns used by Hearst (1992) and Berland and Charniak (1999). Hearst (1992) used various patterns to discover hyponyms in a large corpus. For example, the pattern “ NP_0 such as NP_1 ” provides evidence that NP_1 is a hyponym of NP_0 . Thus the phrase “the bow lute, such as the Bambara

ndang” suggests that the *Bambara ndang* is a type of (hyponym of) *bow lute* (Hearst, 1992). The joining term “such as” is item 44 in Table IV.

Berland and Charniak (1999) used patterns to discover meronyms in a large corpus. The pattern “ NP_0 of the NP_1 ” suggests that NP_0 may be a part of (meronym of) NP_1 (“the basement of the building”) (Berland and Charniak, 1999). The joining term “of the” is item 39 in Table IV.

Our work is different from Hearst (1992) and Berland and Charniak (1999) in that they only consider a single semantic relation, rather than multiple classes of semantic relations. Also, we are using these patterns to generate features in a high-dimensional vector, rather than using them to search for particular instances of a specific semantic relationship.

3.3. EXPERIMENTS

In the following experiments, we evaluate the VSM approach to solving analogies using a set of 374 SAT-style verbal analogy problems. This is the same set of questions as was used in Turney et al. (2003), but the experimental setup is different. The ensemble merging rules of Turney et al. (2003) use supervised learning, so the 374 questions were separated there into 274 training questions and 100 testing questions. However, the VSM approach by itself needs no labeled training data, so we are able to test it here on the full set of 374 questions.

Section 3.3.1 considers the task of *recognizing* analogies and Section 3.3.2 takes a step towards *generating* analogies.

3.3.1. *Recognizing Analogies*

Following standard practice in information retrieval (van Rijsbergen, 1979), we define precision, recall, and F as follows:

$$\text{precision} = \frac{\text{number of correct guesses}}{\text{total number of guesses made}}$$

$$\text{recall} = \frac{\text{number of correct guesses}}{\text{maximum possible number correct}}$$

$$F = \frac{2 \times \text{precision} \times \text{recall}}{\text{precision} + \text{recall}}.$$

When any of the denominators are zero, we define the result to be zero. All three of these performance measures range from 0 to 1, and larger values are better than smaller values.

Table VI. Results of experiments with the 374 analogy questions.

	Number	Percent
Correct	176	47.1%
Incorrect	193	51.6%
Skipped	5	1.3%
Total	374	100.0%
Precision	176 / 369	47.7%
Recall	176 / 374	47.1%
<i>F</i>		47.4%

Table VI shows the experimental results for our set of 374 analogy questions. Five questions were skipped because the vector for the stem pair was entirely zeros. Since there are five choices for each question, random guessing would yield a recall of 20%. The algorithm is clearly performing much better than random guessing ($p < 0.0001$ according to Fisher's Exact test).

Our analogy question set (Turney et al., 2003) was constructed from books and web sites intended for students preparing for the SAT college entrance exam, including 90 questions from unofficial SAT preparation web sites, 14 questions from the Educational Testing Service (ETS) web site (<http://www.ets.org/>), 190 questions scanned in from a book with actual SAT exams (Claman, 2000), and 80 questions typed from SAT guidebooks.

The SAT I test consists of 78 verbal questions and 60 math questions (there is also an SAT II test, covering specific subjects, such as chemistry). The questions are multiple choice, with five choices per question. The verbal and math scores are reported separately. The raw SAT I score is calculated by giving one point for each correct answer, zero points for skipped questions, and subtracting one quarter point for each incorrect answer. The quarter point penalty for incorrect answers is chosen so that the expected raw score for random guessing is zero points. The raw score is then converted to a scaled score that ranges from 200 to 800.⁴ The College Board publishes information about the percentile rank of college-bound senior high school students for the SAT I verbal and math questions.⁵ On the verbal SAT test, the mean scaled score for 2002 was 504. We used information from the College Board to make Table VII.

Analogy questions are only a subset of the 78 verbal SAT questions. If we assume that the difficulty of our 374 analogy questions

Table VII. Verbal SAT scores.

Note	Percent correct (no skipping)	SAT I raw score verbal	SAT I scaled score verbal	Percentile rank
	100%	78	800±10	100.0±0.5
	92%	70	740±20	98.0±1.0
	82%	60	645±15	88.5±2.5
	71%	50	580±10	74.0±3.0
College-bound mean –	57%	36	504±10	48.0±3.5
VSM algorithm –	47%	26	445±10	29.0±3.0
	41%	20	410±10	18.5±2.5
	30%	10	335±15	5.5±1.5
Random guessing –	20%	0	225±25	0.5±0.5

is comparable to the difficulty of other verbal SAT questions, then we can estimate that the average college-bound senior would correctly answer about 57% of the 374 analogy questions. We can also estimate that the performance of the VSM approach corresponds to a percentile rank of 29 ± 3 . Claman (2000) suggests that the analogy questions may be somewhat harder than other verbal SAT questions, so we may be slightly overestimating the mean human score on the analogy questions.

There is a well-known trade-off between precision and recall: By skipping hard questions, we can increase precision at the cost of decreased recall. By making multiple guesses for each question, we can increase recall at the cost of decreased precision. The F measure is the harmonic mean of precision and recall. It tends to be largest when precision and recall are balanced.

For some applications, precision may be more important than recall, or vice versa. Thus it is useful to have a way of adjusting the balance between precision and recall. We observed that the difference between the cosine of the best choice and the cosine of the second best choice (the largest cosine minus the second largest) seems to be a good indicator of whether the guess is correct. We call this difference the *margin*. By setting a threshold on the margin, we can trade off precision and recall.

When the threshold on the margin is a positive number, we skip every question for which the margin is less than the threshold. This tends to increase precision and decrease recall. On the other hand, when the threshold on the margin is negative, we make two guesses (both the best and the second best choices) for every question for which

Table VIII. An example of an analogy question, taken from the set of 374 questions.

Stem pair:	traffic:street	Cosine
Choices:	(a) ship:gangplank	0.31874
	(b) crop:harvest	0.57234
	(c) car:garage	0.68757
	(d) pedestrians:feet	0.49725
	(e) water:riverbed	0.69265

the margin is less than the absolute value of the threshold. Ties are unlikely, but if they happen, we break them randomly.

Consider the example in Table VIII. The best choice is (e) and the second best choice is (c). (In this case, the best choice is correct.) The margin is 0.00508 (0.69265 minus 0.68757). If the threshold is between -0.00508 and $+0.00508$, then the output is choice (e) alone. If the threshold is greater than $+0.00508$, then the question is skipped. If the threshold is less than -0.00508 , then the output is both (e) and (c).

Figure 1 shows precision, recall, and F as the threshold on the margin varies from -0.11 to $+0.11$. The vertical line at the threshold zero corresponds to the situation in Table VI. With a threshold of $+0.11$, precision reaches 59.2% and recall drops to 11.2%. With a threshold of -0.11 , recall reaches 61.5% and precision drops to 34.5%. These precision-recall results compare favourably with typical results in information retrieval (Voorhees and Harman, 1997).

In Figure 1, we see that the F value reaches its maximum when the threshold on the margin is near zero. This is expected, since F is intended to favour a balance between precision and recall.

The experiments presented here required 287,232 queries to AltaVista (374 analogy questions \times 6 word pairs per question \times 128 queries per word pair). Although AltaVista is willing to support automated queries of the kind described here, as a courtesy, we inserted a five second delay between each query. Thus processing the 287,232 queries took about seventeen days.

3.3.2. Generating Analogies

The results so far suggest that our algorithm is capable of *recognizing* analogies with some degree of success, but an interesting question is whether it might be capable of *generating* analogies. That is, given a stem pair, the algorithm can often pick out the correct choice pair from a set of five choices, but generating a verbal analogy from scratch is

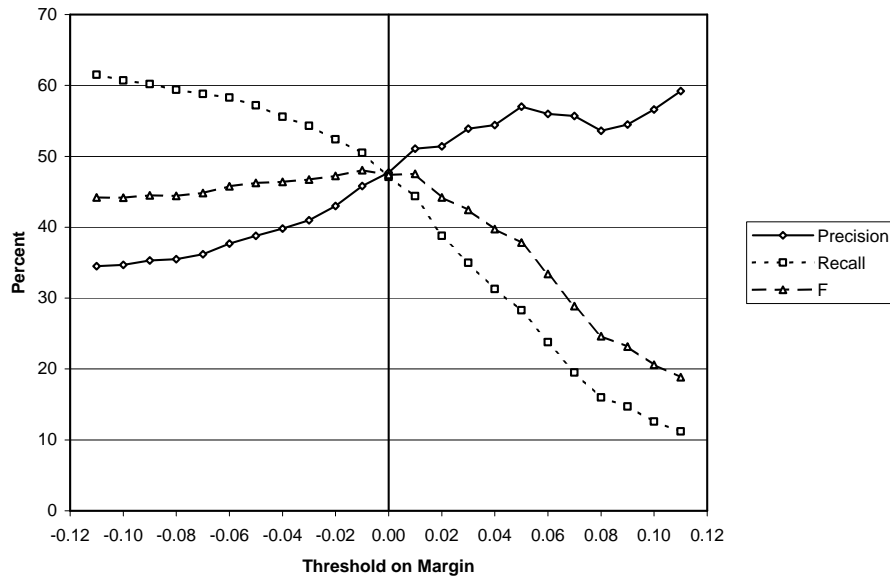


Figure 1. Precision and recall for 374 SAT-style analogy questions.

a more difficult problem. One approach to the generation problem is to try to reduce it to the recognition problem, by randomly generating candidate analogies and then trying to recognize good analogies among the candidates.

As a first step towards generating analogies, we expanded the number of choices for each stem pair. We dropped the five questions for which the stem vector was all zeros, leaving 369 questions. For each of the remaining questions, we combined the 369 correct choice pairs. For each of the 369 stem pairs, the algorithm had to choose the correct word pair from among the 369 possible answers.

For each of the 369 stem pairs, the 369 choice pairs were sorted in order of decreasing cosine. We then examined the top ten most highly ranked choices to see whether the correct choice was among them. Table IX shows the result of this experiment. The first row in the table shows that the first choice was correct for 31 of the 369 stems (8.4%). The last row shows that the correct choice appears somewhere among the top ten choices 29.5% of the time. With random guessing, the correct choice would appear among the top ten 2.7% of the time ($10/369 = 0.027$).

This experiment actually underestimates the quality of the output. Table X shows the top ten choices for two stem pairs. For the first stem pair, barley:grain, the correct choice, according to the original formulation of the test, is pine:tree, which is the third choice here. The semantic relation between barley and grain is *type_of* (hyponym),

Table IX. Selecting the correct word pair from a set of 369 choices.

Rank	Matches	Matches	Cumulative	Cumulative
#	#	%	#	%
1	31	8.4%	31	8.4%
2	19	5.1%	50	13.6%
3	13	3.5%	63	17.1%
4	11	3.0%	74	20.1%
5	6	1.6%	80	21.7%
6	7	1.9%	87	23.6%
7	9	2.4%	96	26.0%
8	5	1.4%	101	27.4%
9	5	1.4%	106	28.7%
10	3	0.8%	109	29.5%

so the first two choices, aluminum:metal and beagle:dog, are perfectly acceptable alternatives. In fact, it could be argued that aluminum:metal is a better choice, because aluminum and barley are mass nouns (i.e., they do not form plurals), but pine is a count noun (e.g., “I have two pines in my yard.”).

For the second stem pair in Table X, tourniquet:bleeding, the original correct choice, splint:movement, is not among the top ten choices. (A tourniquet prevents or reduces bleeding; a splint prevents or reduces movement.) However, the first choice, antidote:poisoning, is a good alternative. (A tourniquet is used to treat bleeding; an antidote is used to treat poisoning.) The seventh choice, assurance:uncertainty, also seems reasonable. (Assurance puts an end to uncertainty; a tourniquet puts an end to bleeding.)⁶

3.4. DISCUSSION

As mentioned in Section 2.1, the VSM algorithm performs as well as an ensemble of twelve other modules (Turney et al., 2003). All of the other modules employed various lexical resources (WordNet, Dictionary.com, and Wordsmyth.net), whereas the VSM module learns from a large corpus of unlabeled text, without a lexicon. The VSM performance of 47.1% correct is well above the 20% correct that would be expected for random guessing, but it is also less than the 57% correct that would be expected for the average college-bound senior high school student.

When the number of choices for each stem is expanded from five to 369, the correct choice is among the top ten choices 29.5% of the time,

Table X. Two examples of stem pairs and the top ten choices.

Rank	Word pair	Cosine	Question number
Stem	barley:grain		33
1	aluminum:metal	0.8928	198
2	beagle:dog	0.8458	190
3	<i>pine:tree</i>	<i>0.8451</i>	<i>33</i>
4	emerald:gem	0.8424	215
5	sugar:sweet	0.8240	327
6	pseudonym:name	0.8151	240
7	mile:distance	0.8142	21
8	oil:lubricate	0.8133	313
9	novel:book	0.8117	182
10	minnow:fish	0.8111	193
Stem	tourniquet:bleeding		46
1	antidote:poisoning	0.7540	308
2	belligerent:fight	0.7482	84
3	chair:furniture	0.7481	107
4	mural:wall	0.7430	302
5	reciprocate:favor	0.7429	151
6	menu:diner	0.7421	284
7	assurance:uncertainty	0.7287	8
8	beagle:dog	0.7210	19
9	canvas:painting	0.7205	5
10	ewe:sheep	0.7148	261

where random guessing would give 2.7%. There is certainly much room for improvement, but there is also good evidence that verbal analogies can be solved algorithmically.

The list of joining terms in Table IV is somewhat arbitrary. This list was based on preliminary experiments with a development set of analogy questions. The terms in the list were selected by intuition and there is no reason to believe they are optimal. It might be possible to automatically learn joining terms, perhaps by extending the algorithm of Ravichandran and Hovy (2002).

We attempted to take a more principled approach to the joining terms, by creating a larger list of 142 joining terms, and then using feature selection algorithms (forward selection, backward elimination, genetic algorithm selection) to select an optimal subset of the features. None of the selected subsets were able to achieve statistically signifi-

cantly better performance in cross-validation testing compared to the original set in Table IV. The subsets seemed to overfit the training questions. We believe that this problem can be fixed with a larger set of questions.

The idea of using the *margin* to trade off precision and recall was inspired by Support Vector Machines, which use a somewhat related concept of margin (Cristianini and Shawe-Taylor, 2000). This suggests the possibility of using a supervised learning approach, in which a training set would be used to tune parameters to maximize the margin. We believe that this is a good approach, but so far we have not been successful with it.

The execution time (seventeen days) would be much less if we had a local copy of the AltaVista database. Progress in hardware will soon make it practical for a standard desktop computer to search in a local copy of a corpus of this size (about 10^{11} words).

4. Noun-Modifier Relations

In Section 4.1, we discuss applications for an algorithm for classifying noun-modifier relations. Section 4.2 presents the classes of noun-modifier relations that are used in our experiments (Nastase and Szpakowicz, 2003). The classification algorithm is described in Section 4.3. The experiments are in Section 4.4, followed by discussion of the results in Section 4.5.

4.1. APPLICATIONS

Noun-modifier word pairs are common in English and other languages. An algorithm for classification of noun-modifier relations would be useful in machine translation, information extraction, and word sense disambiguation. We illustrate this with examples taken from the collection of 600 labeled noun-modifier pairs used in our experiments (see Table XI).

Machine translation: A noun-modifier pair such as “electron microscope” might not have a direct translation into an equivalent noun-modifier pair in another language. In the translation process, it may be necessary to expand the noun-modifier pair into a longer phrase, explicitly stating the implicit semantic relation. Is the semantic relation *purpose* (a microscope for electrons; e.g., for viewing electrons), *instrument* (a microscope that uses electrons), or *material* (a microscope made out of electrons)? The answer to this question may be used in translation. (The terms *purpose*, *instrument*, and *material* are explained in Table XI.)

Information extraction: A typical information extraction task would be to process news stories for information about wars. The task may require finding information about the parties involved in the conflict. It would be important to know that the semantic relation in the noun-modifier pair “cigarette war” is *topic* (a war about cigarettes), not *agent* (a war by cigarettes; i.e., cigarettes are fighting the war).

Word sense disambiguation: The word “plant” might refer to an industrial plant or a living organism. If a document contains the noun-modifier pair “plant food”, a word sense disambiguation algorithm can take advantage of the information that the semantic relation involved is *beneficiary* (the plant benefits from the food), rather than *source* (the plant is the source of the food).

4.2. CLASSES OF RELATIONS

The following experiments use the 600 labeled noun-modifier pairs of Nastase and Szpakowicz (2003). This data set includes information about the part of speech and WordNet synset (synonym set; i.e., word sense tag) of each word, but our algorithm does not use this information.

Table XI lists the 30 classes of semantic relations. The table is based on Appendix A of Nastase and Szpakowicz (2003), with some simplifications. The original table listed several semantic relations for which there were no instances in the data set. These were relations that are typically expressed with longer phrases (three or more words), rather than noun-modifier word pairs. For clarity, we decided not to include these relations in Table XI.

In this table, *H* represents the head noun and *M* represents the modifier. For example, in “flu virus”, the head noun (*H*) is “virus” and the modifier (*M*) is “flu” (*). In English, the modifier (typically a noun or adjective) usually precedes the head noun. In the description of *purpose*, *V* represents an arbitrary verb. In “concert hall”, the hall is for presenting concerts (*V* is “present”) or holding concerts (*V* is “hold”) (†).

Nastase and Szpakowicz (2003) organized the relations into groups. The five capitalized terms in the “Relation” column of Table XI are the names of five groups of semantic relations. (The original table had a sixth group, but there are no examples of this group in the data set.) We make use of this grouping in Section 4.4.2.

Table XI. Classes of semantic relations (Nastase and Szpakowicz, 2003).

Relation	Abbr.	Example phrase	Description
CAUSALITY			
cause	cs	flu virus (*)	<i>H</i> makes <i>M</i> occur or exist, <i>H</i> is necessary and sufficient
effect	eff	exam anxiety	<i>M</i> makes <i>H</i> occur or exist, <i>M</i> is necessary and sufficient
purpose	prp	concert hall (†)	<i>H</i> is for <i>V</i> -ing <i>M</i> , <i>M</i> does not necessarily occur or exist
detraction	detr	headache pill	<i>H</i> opposes <i>M</i> , <i>H</i> is not sufficient to prevent <i>M</i>
TEMPORALITY			
frequency	freq	daily exercise	<i>H</i> occurs every time <i>M</i> occurs
time at	tat	morning exercise	<i>H</i> occurs when <i>M</i> occurs
time through	tthr	six-hour meeting	<i>H</i> existed while <i>M</i> existed, <i>M</i> is an interval of time
SPATIAL			
direction	dir	outgoing mail	<i>H</i> is directed towards <i>M</i> , <i>M</i> is not the final point
location	loc	home town	<i>H</i> is the location of <i>M</i>
location at	lat	desert storm	<i>H</i> is located at <i>M</i>
location from	lfr	foreign capital	<i>H</i> originates at <i>M</i>
PARTICIPANT			
agent	ag	student protest	<i>M</i> performs <i>H</i> , <i>M</i> is animate or natural phenomenon
beneficiary	ben	student discount	<i>M</i> benefits from <i>H</i>
instrument	inst	laser printer	<i>H</i> uses <i>M</i>
object	obj	metal separator	<i>M</i> is acted upon by <i>H</i>
object property	obj_prop	sunken ship	<i>H</i> underwent <i>M</i>
part	part	printer tray	<i>H</i> is part of <i>M</i>
possessor	posr	national debt	<i>M</i> has <i>H</i>
property	prop	blue book	<i>H</i> is <i>M</i>
product	prod	plum tree	<i>H</i> produces <i>M</i>
source	src	olive oil	<i>M</i> is the source of <i>H</i>
stative	st	sleeping dog	<i>H</i> is in a state of <i>M</i>
whole	whl	daisy chain	<i>M</i> is part of <i>H</i>
QUALITY			
container	cntr	film music	<i>M</i> contains <i>H</i>
content	cont	apple cake	<i>M</i> is contained in <i>H</i>
equative	eq	player coach	<i>H</i> is also <i>M</i>
material	mat	brick house	<i>H</i> is made of <i>M</i>
measure	meas	expensive book	<i>M</i> is a measure of <i>H</i>
topic	top	weather report	<i>H</i> is concerned with <i>M</i>
type	type	oak tree	<i>M</i> is a type of <i>H</i>

4.3. NEAREST-NEIGHBOUR APPROACH

The following experiments use single nearest-neighbour classification with leave-one-out cross-validation. A vector of 128 numbers is calculated for each noun-modifier pair, as described in Section 3.2. The similarity of two vectors is measured by the cosine of their angle. For leave-one-out cross-validation, the testing set consists of a single vector and the training set consists of the 599 remaining vectors. The data set is split 600 times, so that each vector gets a turn as the testing vector. The predicted class of the testing vector is the class of the single nearest neighbour (the vector with the largest cosine) in the training set.

4.4. EXPERIMENTS

Section 4.4.1 looks at the problem of assigning the 600 noun-modifier pairs to thirty different classes. Section 4.4.2 considers the easier problem of assigning them to five different classes.

4.4.1. *Thirty Classes*

Table XII gives the precision, recall, and F values for each of the 30 classes. The column labeled “class percent” corresponds to the expected precision, recall, and F for the simple strategy of guessing each class randomly, with a probability proportional to the class size. The actual average F of 26.5% is much larger than the average F of 3.3% that would be expected for random guessing. The difference (23.2%) is significant with 99% confidence ($p < 0.0001$, according to the paired t-test). The accuracy is 27.8% (167/600).

The average precision, recall, and F values in Table XII are calculated using macroaveraging, rather than microaveraging (Lewis, 1991). Microaveraging combines the true positive, false positive, and false negative counts for all of the classes, and then calculates precision, recall, and F from the combined counts. Macroaveraging calculates the precision, recall, and F for each class separately, and then calculates the averages across all classes. Macroaveraging gives equal weight to all classes, but microaveraging gives more weight to larger classes. We use macroaveraging (giving equal weight to all classes), because we have no reason to believe that the class sizes in the data set reflect the actual distribution of the classes in a real corpus. (Microaveraging would give a slight boost to our results.)

We can adjust the balance between precision and recall, using a method similar to the approach in Section 3.3.1. For each noun-modifier pair that is to be classified, we find the two nearest neighbours. If the two nearest neighbours belong to the same class, then we output that class as our guess for the noun-modifier pair that is to be classified.

Table XII. The precision, recall, and F for each of the 30 classes of semantic relations.

Class name	Class size	Class percent	Precision	Recall	F
ag	36	6.0%	40.7%	30.6%	34.9%
ben	9	1.5%	20.0%	22.2%	21.1%
cntr	3	0.5%	40.0%	66.7%	50.0%
cont	15	2.5%	23.5%	26.7%	25.0%
cs	17	2.8%	18.2%	11.8%	14.3%
detr	4	0.7%	50.0%	50.0%	50.0%
dir	8	1.3%	33.3%	12.5%	18.2%
eff	34	5.7%	13.5%	14.7%	14.1%
eq	5	0.8%	0.0%	0.0%	0.0%
freq	16	2.7%	47.1%	50.0%	48.5%
inst	35	5.8%	15.6%	14.3%	14.9%
lat	22	3.7%	14.3%	13.6%	14.0%
lfr	21	3.5%	8.0%	9.5%	8.7%
loc	5	0.8%	0.0%	0.0%	0.0%
mat	32	5.3%	34.3%	37.5%	35.8%
meas	30	5.0%	69.2%	60.0%	64.3%
obj	33	5.5%	21.6%	24.2%	22.9%
obj_prop	15	2.5%	71.4%	33.3%	45.5%
part	9	1.5%	16.7%	22.2%	19.0%
posr	30	5.0%	23.5%	26.7%	25.0%
prod	16	2.7%	14.7%	31.3%	20.0%
prop	49	8.2%	55.2%	32.7%	41.0%
prp	31	5.2%	14.9%	22.6%	17.9%
src	12	2.0%	33.3%	25.0%	28.6%
st	9	1.5%	0.0%	0.0%	0.0%
tat	30	5.0%	64.3%	60.0%	62.1%
top	45	7.5%	20.0%	20.0%	20.0%
tthr	6	1.0%	40.0%	33.3%	36.4%
type	16	2.7%	26.1%	37.5%	30.8%
whl	7	1.2%	8.3%	14.3%	10.5%
Average	20	3.3%	27.9%	26.8%	26.5%

Otherwise, we calculate the margin (the cosine of the first nearest neighbour minus the cosine of the second nearest neighbour). Let m be the margin and let t be the threshold. If $-m \leq t \leq +m$, then we output the class of the first nearest neighbour as our guess for the given noun-modifier pair. If $t > m$, then we abstain from classifying the given noun-modifier pair (we output no guess). If $t < -m$, then we output two guesses for the given noun-modifier pair, the classes of both the first and second nearest neighbours.

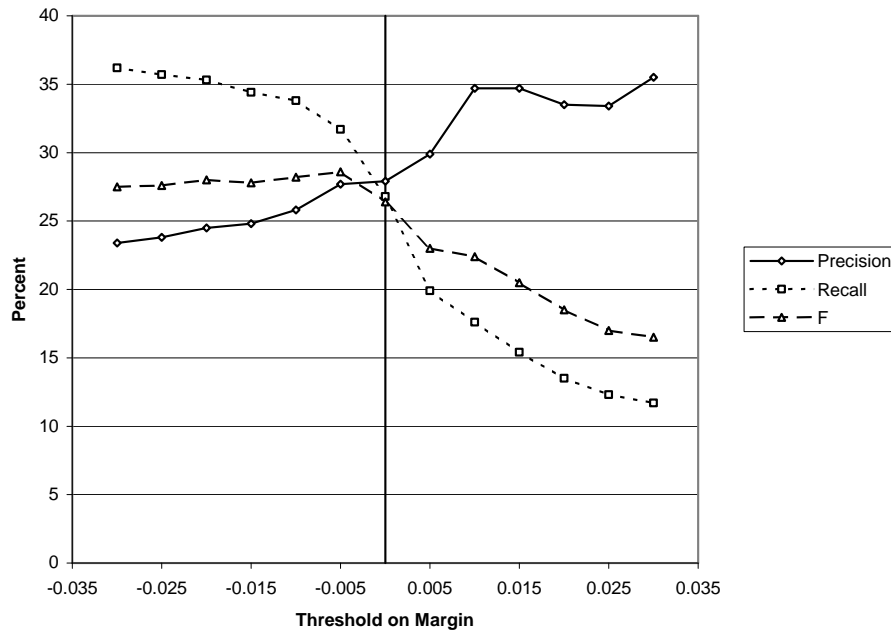


Figure 2. Precision, recall, and F with varying thresholds on the margin, for 30 classes.

Figure 2 shows the trade-off between precision and recall as the threshold on the margin varies from -0.03 to $+0.03$. The precision, recall, and F values that are plotted here are the averages across the 30 classes. The vertical line at zero corresponds to the bottom row in Table XII. With a threshold of $+0.03$, precision rises to 35.5% and recall falls to 11.7%. With a threshold of -0.03 , recall rises to 36.2% and precision falls to 23.4%.

In Figure 2, F is higher for negative thresholds on the margin. We do not have an explanation for this. We believe it is due to noise.

4.4.2. Five Classes

Classification with 30 distinct classes is a hard problem. To make the task easier, we can collapse the 30 classes to 5 classes, using the grouping that is given in Table XI. For example, *agent* and *beneficiary* both collapse to *participant*. Table XIII gives the results for the 5 class problem. Random guessing would yield an average F value of 20.0%, but the actual average F value is 43.2%. The difference (23.2%) is significant with 95% confidence ($p < 0.05$, according to the paired t-test). The accuracy is 45.7% (274/600).

As before, we can adjust the balance between precision and recall by varying a threshold on the margin. Figure 3 shows precision and

Table XIII. The precision, recall, and F for each of the 5 groups of classes of semantic relations.

Class name	Class size	Class percent	Precision	Recall	F
causality	86	14.3%	21.2%	24.4%	22.7%
participant	260	43.3%	55.3%	51.9%	53.6%
quality	146	24.3%	45.4%	47.3%	46.3%
spatial	56	9.3%	29.1%	28.6%	28.8%
temporality	52	8.7%	66.0%	63.5%	64.7%
Average	120	20.0%	43.4%	43.1%	43.2%

recall as the threshold varies from -0.03 to $+0.03$. The precision, recall, and F values are averages across the 5 classes (macroaverages). The vertical line at zero corresponds to the bottom row in Table XIII. With a threshold of $+0.03$, precision rises to 51.6% and recall falls to 23.9%. With a threshold of -0.03 , recall rises to 56.9% and precision falls to 37.2%.

These experiments required 76,800 queries to AltaVista (600 word pairs \times 128 queries per word pair). With a five second delay between each query, processing the queries took about five days.

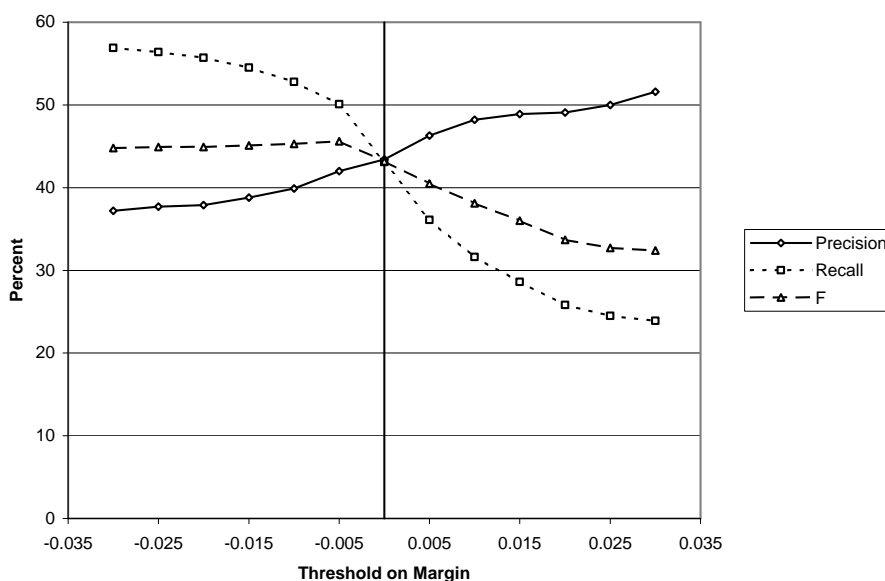


Figure 3. Precision, recall, and F with varying thresholds on the margin, for 5 classes.

4.5. DISCUSSION

The performance of the nearest-neighbour VSM algorithm is well above random chance. With 30 classes, the average F is 26.5%, where random guessing would give an expected average F of 3.3%. With 5 classes, the average F is 43.2%, where random guessing would give an expected average F of 20.0%. As far as we know, this is the first attempt to classify semantic relations without a lexicon. Research with the same data (Nastase and Szpakowicz, 2003), but using a lexicon, is still in the exploratory phase.

However, there is clearly much opportunity for improvement. Most practical tasks would likely require higher accuracy than we have obtained here. One place to look for improvement is in the joining terms. For the experiments in this section, we used the same joining terms as with the analogy questions (Table IV). It seems possible that the joining terms that work best for analogy questions are not necessarily the same as the terms that work best for classifying semantic relations. The kinds of semantic relations that are typically tested in SAT questions are not necessarily the kinds of semantic relations that typically appear in noun-modifier pairs.

We also expect better results with more data. Although 600 noun-modifier pairs may seem like a lot, there are 30 classes, so the average class has only 20 examples. We would like to have at least 100 examples of each class, but manually labeling 3000 examples would require a substantial amount of painstaking effort.

The classification scheme given in Table XI is only one of many possible ways of classifying semantic relations. Each of the papers discussed in Section 2.3 has a different classification of semantic relations (Vanderwende, 1994; Barker and Szpakowicz, 1998; Rosario and Hearst, 2001; Rosario et al., 2002; Nastase and Szpakowicz, 2003). Madsen et al. (2001) give a carefully constructed hierarchy of semantic relations, but this classification scheme has not yet been applied to labeling noun-modifier pairs. None of these classification schemes have been validated by determining the level of inter-annotator agreement.

Another limitation is the assumption that each noun-modifier pair can only belong to one class. For example, “concert hall” might be classified as *purpose* (Table XI), but it could equally well be classified as *location*. A more flexible approach would allow multiple labels for each noun-modifier pair.

It is reasonable to doubt that any classification scheme for semantic relations can be complete. Each domain has its own special types of semantic relations. For example, Stephens et al. (2001) provide a classification scheme for relationships between genes, including classes such

as “ NP_0 phosphorylates NP_1 ”. However, it is plausible that a general-purpose scheme like Table XI can capture the majority of semantic relations in general text at a reasonable level of granularity.

5. Limitations and Future Work

Perhaps the biggest limitation of this work is the accuracy that we have achieved so far. Although it is state-of-the-art for SAT analogy questions and unrestricted-domain noun-modifier semantic relations, it is lower than we would like. However, both of these tasks are ambitious and research on them is relatively new. We believe that the results are promising and we expect significant improvements in the near future.

The VSM has been extensively explored in information retrieval. There are many ideas in the IR literature that might be used to enhance the performance of VSM applied to analogies and semantic relations. We have begun some preliminary exploration of various term weighting schemes (Salton and Buckley, 1988) and extensions of the VSM such as the GVSM (Wong et al., 1985) and LSA (Landauer and Dumais, 1997).

An area for future work is exploring the sensitivity of the VSM to the size of the corpus. It seems plausible that our (limited) success with the VSM is due (to a large extent) to the huge corpus indexed by AltaVista. It is possible that the data we need, regarding relations between words, is highly sparse. Our approach might fail with a typical corpus, such as the British National Corpus (BNC). We estimate that AltaVista indexes about 10^{11} words, but BNC only contains about 10^8 words.

However, more sophisticated algorithms, such as LSA, may be able to extract the necessary information from a much smaller corpus. For the task of measuring similarity between individual words, Landauer and Dumais (1997) compared the cosine measure using vectors generated directly from a corpus versus vectors generated by applying LSA to the corpus. On the TOEFL multiple-choice synonym questions, the cosine measure with directly-generated vectors achieved a score of only 36.8%, but the cosine measure with LSA-generated vectors achieved a score of 64.4%.⁷

We believe that our set of joining terms (Table IV) is far from ideal. It seems likely that much larger vectors, with thousands of elements instead of 128, would improve the performance of the VSM algorithm. With the current state of technology, experiments with alternative sets of joining terms are very time consuming.

The joining terms raise some interesting questions, which we have not yet addressed. Which terms are most important? Many of them are prepositions. Does this work have any significant implications for research in the semantics of prepositions (Regier, 1996)? Many of them are verbs. What are the implications for research in the semantics of verbs (Gildea and Jurafsky, 2002)? Can we use any ideas from research on prepositions and verbs to guide the search for an improved set of joining terms? These are questions for future work.

In this paper, we have focused on the VSM algorithm, but we believe that ensemble methods will ultimately prove to yield the highest accuracy (Turney et al., 2003). Language is a complex, heterogeneous phenomenon, and it seems unlikely that any single, pure approach will be best. The best approach to analogies and semantic relations will likely combine statistical and lexical resources. However, as a research strategy, it seems wise to attempt to push the performance of each individual module as far as possible before combining the modules.

6. Conclusion

We believe that analogy and metaphor play a central role in human cognition and language (Lakoff and Johnson, 1980; Hofstadter et al., 1995; French, 2002). SAT-style analogy questions are a simple but powerful and objective tool for investigating these phenomena. Much of our everyday language is metaphorical, so progress in this area is important for computer processing of natural language.

A more direct application of SAT question answering technology is classifying noun-modifier relations, which has potential applications in machine translation, information extraction, and word sense disambiguation. Contrariwise, a good algorithm for classifying semantic relations should also help to solve verbal analogies, which argues for a strong connection between recognizing analogies and classifying semantic relations.

In this paper, we have shown how the cosine metric in the Vector Space Model can be used to solve analogy questions and to classify semantic relations. The VSM performs much better than random chance, but below human levels. However, the results indicate that these challenging tasks are tractable and we expect further improvements. We believe that the VSM can play a useful role in an ensemble of algorithms for learning analogies and semantic relations.

Acknowledgements

We are grateful to Vivi Nastase and Stan Szpakowicz for sharing their list of 600 classified noun-modifier phrases with us. Thanks to AltaVista for allowing us to send so many queries to their search engine. Thanks to the anonymous referees of *Machine Learning* for their helpful comments on an earlier version of this paper, and to the editors, Pascale Fung and Dan Roth, for their work on preparing this special issue.

Notes

¹ The College Board has announced that analogies will be eliminated from the SAT in 2005 (<http://www.collegeboard.com/about/newsat/newsat.html>), as part of a shift in the exam to reflect changes in the curriculum. The SAT was introduced as the Scholastic Aptitude Test in 1926, its name was changed to Scholastic Assessment Test in 1993, then changed to simply SAT in 1997.

² All nine possible combinations of noun, verb, and adjective can be found in the word pairs in our 374 SAT questions. In an SAT analogy $A:B::C:D$, A and C have the same part of speech and B and D have the same part of speech.

³ We add 1 to x because the logarithm of zero is undefined. The base of the logarithm does not matter, since all logarithms are equivalent up to a constant multiplicative factor. Any constant factor drops out when calculating the cosine.

⁴ See http://www.collegeboard.com/prod_downloads/about/news_info/cbsenior/yr2002/pdf/two.pdf.

⁵ See http://www.collegeboard.com/prod_downloads/about/news_info/cbsenior/yr2002/pdf/threeA.pdf.

⁶ Even if the reader does not agree with our judgments about what “seems reasonable”, the performance of 29.5% remains valid as a lower bound on the quality of the output; we only disagree on how far the quality is from this lower bound.

⁷ Landauer and Dumais (1997) report scores that were corrected for guessing by subtracting a penalty of 1/3 for each incorrect answer. The performance of 64.4% translates to 52.5% when corrected for guessing, and 36.8% translates to 15.8%.

References

- Aristotle. *Nicomachean Ethics*. Ed. S. Broadie, Trans. C. Rowe, Oxford University Press, 2001.
- Baeza-Yates, R., and Ribeiro-Neto, B. *Modern Information Retrieval*. Addison-Wesley, 1999.
- Barker, K., and Szpakowicz, S. Semi-automatic recognition of noun modifier relationships. *Proceedings of the 17th International Conference on Computational Linguistics and the 36th Annual Meeting of the Association for Computational Linguistics (COLING-ACL'98)*, Montreal, Quebec, 96-102, 1998.
- Berland, M. and Charniak, E. Finding parts in very large corpora. *Proceedings of the 37th Annual Meeting of the Association for Computational Linguistics (ACL'99)*, ACL, New Brunswick NJ, 57-64, 1999.

- Church, K.W., and Hanks, P. Word association norms, mutual information and lexicography. *Proceedings of the 27th Annual Conference of the Association of Computational Linguistics*, Association for Computational Linguistics, New Brunswick, NJ, 76-83, 1989.
- Claman, C. *10 Real SATs*. College Entrance Examination Board, 2000.
- Cristianini, N., and Shawe-Taylor, J. *An Introduction to Support Vector Machines*. Cambridge University Press, Cambridge, UK, 2000.
- Dagan, I., Marx, Z., and Shamir, E. Cross-dataset clustering: Revealing corresponding themes across multiple corpora. *Sixth Conference on Natural Language Learning (CoNLL-2002)*, Taipei, Taiwan, 15-21, 2002.
- Daganzo, C.F. The cell transmission model: A dynamic representation of highway traffic consistent with the hydrodynamic theory. *Transportation Research Part B: Methodological*, 28(4), 269-287, 1994.
- Dolan, W.B. Metaphor as an emergent property of machine-readable dictionaries. *Proceedings of the AAAI 1995 Spring Symposium Series: Representation and Acquisition of Lexical Knowledge: Polysemy, Ambiguity and Generativity*, 27-32, 1995.
- Dunning, T. Accurate methods for the statistics of surprise and coincidence. *Computational Linguistics*, 19, 61-74, 1993.
- Falkenhainer, B., Forbus, K.D., and Gentner, D. The structure-mapping engine: Algorithm and examples. *Artificial Intelligence*, 41(1), 1-63, 1989.
- Falkenhainer, B. Analogical interpretation in context. *Proceedings of the Twelfth Annual Conference of the Cognitive Science Society*, Lawrence Erlbaum Associates, 69-76, 1990.
- Fellbaum, C. (editor). *WordNet: An Electronic Lexical Database*. MIT Press, 1998.
- French, R.M. The computational modeling of analogy-making. *Trends in Cognitive Sciences*, 6(5), 200-205, 2002.
- Gentner, D. Structure-mapping: A theoretical framework for analogy. *Cognitive Science*, 7(2), 155-170, 1983.
- Gildea, D., and Jurafsky, D. Automatic labeling of semantic roles. *Computational Linguistics*, 28(3), 245-288, 2002.
- Hearst, M.A. Automatic acquisition of hyponyms from large text corpora. *Proceedings of the Fourteenth International Conference on Computational Linguistics*, Nantes, France, 539-545, 1992.
- Hofstadter, D., and the Fluid Analogies Research Group. *Fluid Concepts and Creative Analogies: Computer Models of the Fundamental Mechanisms of Thought*. Basic Books, 1995.
- Lakoff, G., and Johnson, M. *Metaphors We Live By*. University of Chicago Press, 1980.
- Landauer, T.K., and Dumais, S.T. A solution to Plato's problem: The latent semantic analysis theory of the acquisition, induction, and representation of knowledge. *Psychological Review*, 104, 211-240, 1997.
- Lapata, M., and Lascarides, A. A probabilistic account of logical metonymy. *Computational Linguistics*, 29(2), 261-315, 2003.
- Lesk, M.E. Word-word associations in document retrieval systems. *American Documentation*, 20(1): 27-38, 1969.
- Lewis, D.D. Evaluating text categorization. *Proceedings of the Speech and Natural Language Workshop*, Asilomar, 312-318, 1991.
- Lin, D. An information-theoretic definition of similarity. *Proceedings of the Fifteenth International Conference on Machine Learning (ICML'98)*, Madison, Wisconsin, July, 296-304, 1998.

- Madsen, B.N., Pedersen, B.S., and Thomsen, H.E. Defining semantic relations for OntoQuery. In P.A. Jensen and P. Skadhauge (eds.), *Ontology-based Interpretation of Noun Phrases: Proceedings of the First International OntoQuery Workshop*, Department of Business Communication and Information Science, University of Southern Denmark, Kolding, 2001.
- Marx, Z., Dagan, I., Buhmann, J., and Shamir, E. Coupled clustering: A method for detecting structural correspondence. *Journal of Machine Learning Research*, 3, 747-780, 2002.
- Nastase, V., and Szpakowicz, S. Exploring noun-modifier semantic relations. *Fifth International Workshop on Computational Semantics (IWCS-5)*, Tilburg, The Netherlands, 285-301, 2003.
- Pantel, P., and Lin, D. Discovering word senses from text. *Proceedings of ACM SIGKDD Conference on Knowledge Discovery and Data Mining*, 613-619, 2002.
- Ravichandran, D., and Hovy, E. Learning surface text patterns for a question answering system. *Proceedings of the 40th Annual Meeting of the Association for Computational Linguistics (ACL-02)*, Philadelphia, July, 41-47, 2002.
- Regier, T. *The Human Semantic Potential: Spatial Language and Constrained Connectionism*. MIT Press, Cambridge, MA, 1996.
- Reitman, W.R. *Cognition and Thought: An Information Processing Approach*. John Wiley and Sons, 1965.
- Resnik, P. Using information content to evaluate semantic similarity in a taxonomy. *Proceedings of the 14th International Joint Conference on Artificial Intelligence*, Morgan Kaufmann, San Mateo, CA, 448-453, 1995.
- Resnik, P. Mining the Web for bilingual text. *Proceedings of the 37th Annual Meeting of the Association for Computational Linguistics (ACL'99)*, College Park, Maryland, 527-534, 1999a.
- Resnik, P. Semantic similarity in a taxonomy: An information-based measure and its application to problems of ambiguity in natural language. *Journal of Artificial Intelligence Research*, 11, 95-130, 1999b.
- Rosario, B., and Hearst, M. Classifying the semantic relations in noun-compounds via a domain-specific lexical hierarchy. *Proceedings of the 2001 Conference on Empirical Methods in Natural Language Processing (EMNLP-01)*, 82-90, 2001.
- Rosario, B., Hearst, M., and Fillmore, C. The descent of hierarchy, and selection in relational semantics. *Proceedings of the 40th Annual Meeting of the Association for Computational Linguistics (ACL'02)*, Philadelphia, PA, 417-424, 2002.
- Ruge, G. Experiments on linguistically-based term associations. *Information Processing and Management*, 28(3), 317-332, 1992.
- Salton, G., and McGill, M.J. *Introduction to Modern Information Retrieval*. McGraw-Hill, New York, 1983.
- Salton, G. *Automatic Text Processing: The Transformation, Analysis, and Retrieval of Information by Computer*. Addison-Wesley, Reading, Massachusetts, 1989.
- Salton, G., and Buckley, C. Term-weighting approaches in automatic text retrieval. *Information Processing and Management*, 24(5), 513-523, 1988.
- Skeat, W.W., *A Concise Etymological Dictionary of the English Language*. Capricorn Books, 1963.
- Smadja, F. Retrieving collocations from Text: Xtract. *Computational Linguistics*, 19, 143-177, 1993.
- Stephens, M., Palakal, M., Mukhopadhyay, S., Raje, R., and Mostafa, J. Detecting gene relations from MEDLINE abstracts. *Pacific Symposium on Biocomputing*, 6, 483-496, 2001.

- Turney, P.D. Mining the Web for synonyms: PMI-IR versus LSA on TOEFL. *Proceedings of the Twelfth European Conference on Machine Learning*, Springer-Verlag, Berlin, 491-502, 2001.
- Turney, P.D., and Littman, M.L. Measuring praise and criticism: Inference of semantic orientation from association. *ACM Transactions on Information Systems (TOIS)*, 21(4), 315-346, 2003.
- Turney, P.D., Littman, M.L., Bigham, J., and Shnayder, V. Combining independent modules to solve multiple-choice synonym and analogy problems. *Proceedings of the International Conference on Recent Advances in Natural Language Processing (RANLP-03)*. Borovets, Bulgaria, 482-489, 2003.
- van Rijsbergen, C.J. *Information Retrieval (2nd edition)*, Butterworths, London, 1979.
- Vanderwende, L. Algorithm for automatic interpretation of noun sequences. *Proceedings of the Fifteenth International Conference on Computational Linguistics*, Kyoto, Japan, 782-788, 1994.
- Veale, T. The analogical thesaurus. *Proceedings of the Fifteenth Innovative Applications of Artificial Intelligence Conference (IAAI-03)*, Acapulco, Mexico, 137-142, 2003.
- Voorhees, E.M., and Harman, D.K. Overview of the fifth Text Retrieval Conference (TREC-5). *Proceedings of the Fifth Text Retrieval Conference (TREC-5)*, pp. 1-28. NIST Special Publication 500-238, 1997.
- Wong, S.K.M., Ziarko, W., and Wong, P.C.N. Generalized vector space model in information retrieval. *Proceedings of the 8th Annual International ACM SIGIR Conference on Research and Development in Information Retrieval (SIGIR-85)*, 18-25, 1985.
- Yi, J., Lin, H., Alvarez, L., and Horowitz, R. Stability of macroscopic traffic flow modeling through wavefront expansion. *Transportation Research Part B: Methodological*, 37(7), 661-679, 2003.
- Zhang, H.M. Driver memory, traffic viscosity and a viscous vehicular traffic flow model. *Transportation Research Part B: Methodological*, 37(1), 27-41, 2003.